

PRINCIPAL TOWER

LONDON EC2



SUMMER NEWSLETTER 2016

www.principaltower.com

SUMMER 2016 – PRINCIPAL TOWER

Information about the building,
sales updates and more

WHAT'S HAPPENING IN THE AREA



Findings at Shakespeare's Curtain Theatre Revealed

Archaeologists from Museum of London Archaeology revealed new items they discovered during their excavation of the Curtain Theatre on 17th May. The group is working on using the remains of the theatre as part of a cultural and visitor centre at the heart of The Stage. This new area will feature housing, office space, a performance area and park in Shoreditch.

Heather Knight, the Senior Archaeologist leading the dig said, "the preservation of the Curtain is exceptional and every day new things are coming to light." The excavation group is expecting to work for the next month to continue to reveal the secrets behind the Curtain Theatre. The public can book tours on Friday's from now until 24 June to view the site.

To book a tour and full details about the site visit:
www.mola.org.uk/events

Free range 2016: A season a new creative works

One of UK's largest graduate art, design and fashion show opened on 10th June and will continue through 18th July. Centred in the creative hub of East London, this exhibit showcases a wide range of work produced by up-and-coming artists in the UK area.

Over the course of the five weeks there will be more than 3,000 exhibits from 50 universities. The Old Truman Brewery arts and media quarter will house these exhibits now expanded over its three storeys to offer the exhibition a large and diverse space. Old Truman Brewery is a hive for creative businesses including independent shops, galleries, markets, bars and restaurants. The ten-acre site will offer a diverse space for the exhibition to display all of the artwork.

Each week during the exhibition will feature a different medium of art. Different weeks include illustration, design, art, photography, architecture and interior design. Tickets are free to anyone.

To learn more about the different weeks and artist exhibited go to: www.free-range.org.uk

WHAT'S HAPPENING IN THE AREA



Spitalfields Summer Music Festival

From the 2nd to the 26th of June, the festival is bringing its music to unexpected places, from museums, cafés and churches to markets and gardens. The worlds of opera, folk, jazz, early, choral and contemporary will be colliding to create memorable moments in the unique area of Spitalfields.

Tickets can be booked on their website:
www.spitalfieldsmusic.org.uk



Vintage Saturday

Starting on 21st May, every Saturday at Old Spitalfields Market is Vintage Saturday. There are over 25 stalls of vintage fashion, home-ware, jewellery and accessories.

Follow Vintage Saturday on Facebook, Instagram and Twitter for more details.

ADDRESS:
Old Spitalfields Market
109 Commercial Street
Spitalfields, London
E1 6BG

New Openings

La Petit Provence
www.thefollybar.co.uk
41 Gracechurch Street, London EC3V 0BT

Drake & Morgan's 'La Petite Provence', is a pop-up restaurant taking up temporary residency at The Folly restaurant & bar in the heart of the City. The Provençal garden-inspired pop-up features shabby chic French furniture, vintage shutters & photos of the French countryside.

There will be tutored wine tasting sessions led by French wine specialists from Chateau Unang on 22nd of June & Domaine Montrose on 5th July. RSVP is encouraged as spaces are limited at these complimentary events.



Summer Food Festivals

Urban Food Fest

urbanfoodfest.com

162-167 Shoreditch High Street London E1 6HU

A Shoreditch car park is transformed into a food-focused party for this weekly night market. Dishes from all over the world are served from stalls and trucks. Organiser Jessica Tucker (who's a City lawyer by day) has also made sure that the bar's stocked with craft beer, cider, wine and even champagne. Events are often themed, with free cocktails for all those in fancy dress. Check the Urban Food Fest website to see what's coming up. Entry is free.

Urban Food Fest is open from noon until midnight from Saturday June 18 2016 - Saturday December 17 2016. Spaces are limited at these complimentary events.



Gelato Festival

Old Spitalfields Market, 109 Commercial Street, Spitalfields, London, E1 6BG

With warm weather on the way (hopefully!) we will need cooling off. So the Gelato Festival at Old Spitalfields Market, will come in handy. The festival takes place from 24th June - 3rd July 2016..



Dinerama

streetfeast.com/where/dinerama

19 Great Eastern Street, London EC2A 3EJ

Street Feast's Shoreditch street food fest returns for 2016. The two-storey site features 15 different food vendors space for up to 1,000 hungry visitors, with benches and floor space to settle in. You will snacks served at all-star traders such as B.O.B.'s Lobster, Kimchinary, BBQ Lab, Fundi Pizza, Yum Bun and Smokestak. The site has also gained a roof for the chillier months, as well as four new bars (bringing the total to ten) which will serve everything from cans of craft beer to hot cocktails.

Every Thursday, Friday, Saturday and Sunday

Noon to Late

Price: £3, free before 7pm

Tube: Old Street, Overground: Shoreditch High Street



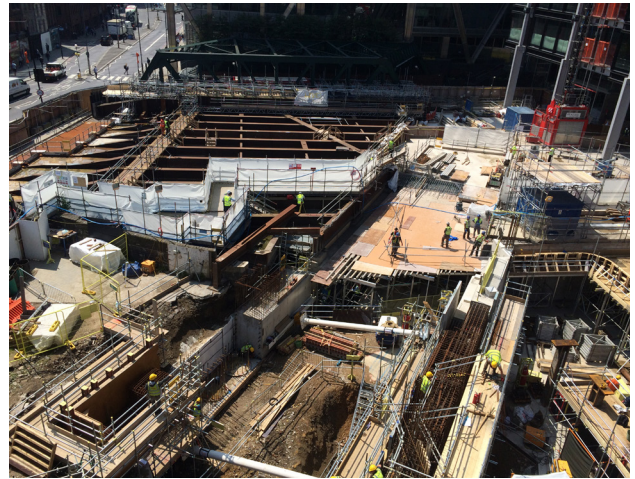
CONSTRUCTION UPDATE:

Construction has progressed significantly with main tower piles, secant perimeter piling, capping beam and associated propping complete. Construction of the west 8 track capping beam is complete, with final section of the east soon to follow. The tower crane has been installed. Installation of 8m strip of ground slab is complete as is the gas governor trench slab. Excavation has been completed to B1 in the top down area, with MoLA excavation to the north section of the blue sky area complete, and excavation in the south section in hand. Final piles will be installed in the blue sky area from mid-July.



KEY ACTIVITIES FOR NEXT PERIOD:

- Completion of capping beam to 8 track box
- Installation of remaining ground floor slab
- Installation of transfer steels to 8 track box
- MoLA completion in the south side of the blue sky area
- Installation of remaining piles to the blue sky area



SOCIAL MEDIA

Receive our latest updates from our social media accounts:



[@W1developments](#)
CLICK TO VIEW



[@w1_developments](#)
CLICK TO VIEW



[@w1_developments](#)
CLICK TO VIEW

You can contact us with any further queries at
info@W1developments.com

SALES REPRESENTATION



JOINT VENTURE MANAGED BY

Brookfield

CONCØRD
PACIFIC



www.principaltower.com

Our next newsletter is being circulated June 2016