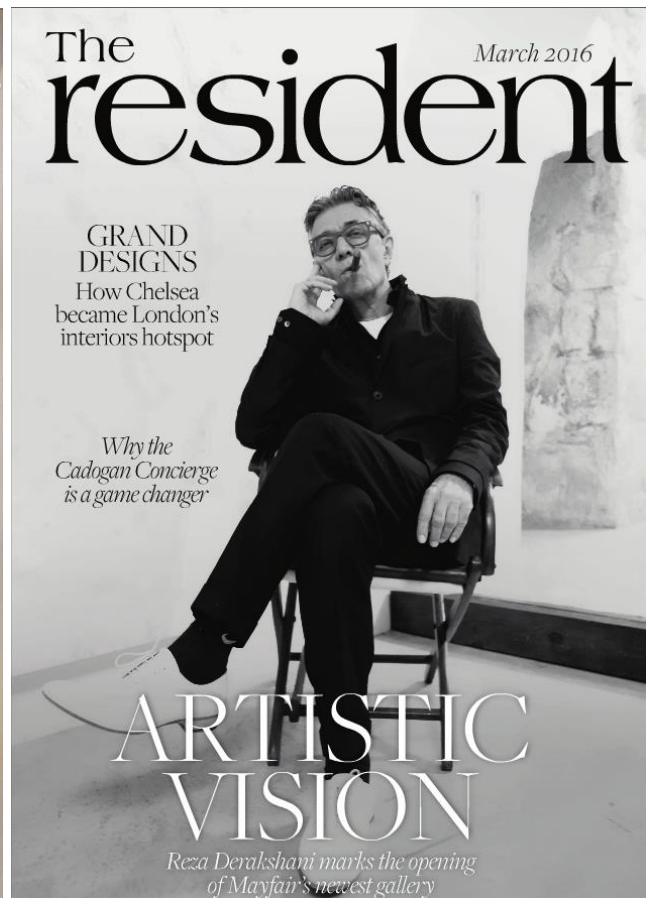


The Resident

March 2016



NEW



PROPERTY NEWS

Landmark developments across London



RIGHT AT HOME

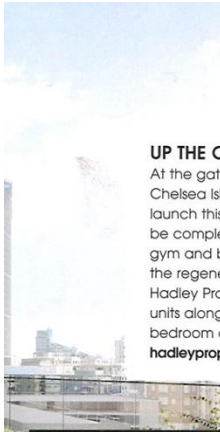
John D Wood & Co. has produced a filmed commercial for release in cinemas this month. Entitled *Welcome Home*, the 60-second commercial takes the form of a series of reminiscences, woven together by a tale of family, laughter and love, all those things that truly make a home. Richard Page, Marketing Director of John D

Wood & Co., comments: 'Rather than the usual "corporate video" we wanted to communicate more of the personal side of property and evoke positive emotions in our audience. This kicks off a big video push for 2016 with more content to be released during the year.'

Welcome Home can be viewed at johndwood.co.uk/welcomehome

UP THE CREEK

At the gateway to new prime neighbourhood Chelsea Riverside, Chelsea Island is an exclusive scheme of 89 apartments that will launch this spring. The one- to four-bedroom luxury apartments will be complemented by a landscaped roof garden, state-of-the-art gym and bespoke concierge service, and marks the final phase in the regeneration of Chelsea Harbour. The development, by Hadley Property Group, also brings luxury retail and restaurant units along the new Creekside Plaza. Prices start at \$1m for a one-bedroom apartment.
hadleypropertygroup.com



HIGH PRAISE

Principal Tower, the 50-storey Foster + Partners designed skyscraper in EC2, has been named as the Best Residential High-Rise Development at the International Property Awards. Due to complete in 2018, Principal Tower comprises 273 luxury apartments and penthouses, priced from £778,000, and is the signature landmark of the Principal Place mixed-use scheme between London's financial hub and Silicon Roundabout.
principaltower.com

IVY LEAGUE

Berkeley Homes has signed The Ivy Collection as its first commercial tenant at its landmark development One Tower Bridge. Occupying a prime riverside unit, the new brasserie will be the first flagship restaurant and is the next step in establishing a new cultural destination on the South Bank, following on from last year's announcement of plans for a new 900-seat theatre.
one-tower-bridge.co.uk



70RK

Where will we find your perfect buyer?

As the exclusive UK affiliate of Christie's International Real Estate network, we can reach quality buyers in 44 countries via 932 offices and a website visited 135,600 times a month.

struttandparker.com

CHRISTIE'S
INTERNATIONAL REAL ESTATE

STRUTT
& PARKER